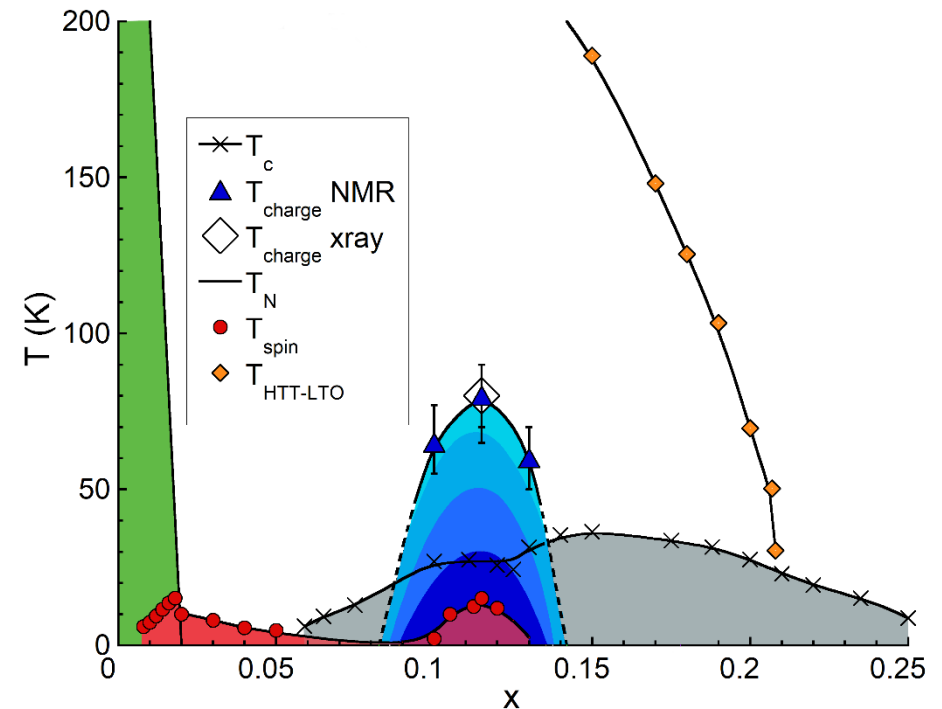
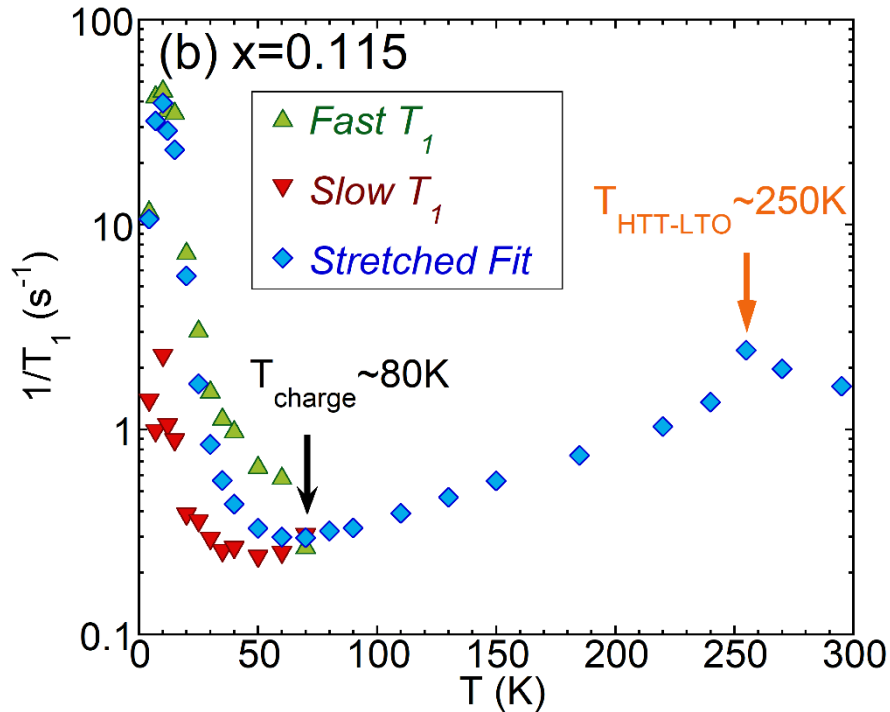


^{139}La NMR Study of Charge Order in $\text{La}_{2-x}\text{Sr}_x\text{CuO}_4$ Single Crystals

Alexandre Arsenault¹, Sean K. Takahashi¹, Takashi Imai^{1,2}, Wei He³, Young S. Lee³, Masaki Fujita⁴

¹ McMaster University, ² CIFAR, ³ Stanford University, ⁴ Tohoku University



The ^{139}La spin-lattice relaxation rate, $1/T_1$, splits into a fast and slow component below the charge ordering temperature. By measuring $1/T_1$ of $\text{La}_{2-x}\text{Sr}_x\text{CuO}_4$ for doping concentrations of 10%, 11.5% and 13%, we were able to map out the charge order dome of the phase diagram, peaking at $x \sim 1/8$.