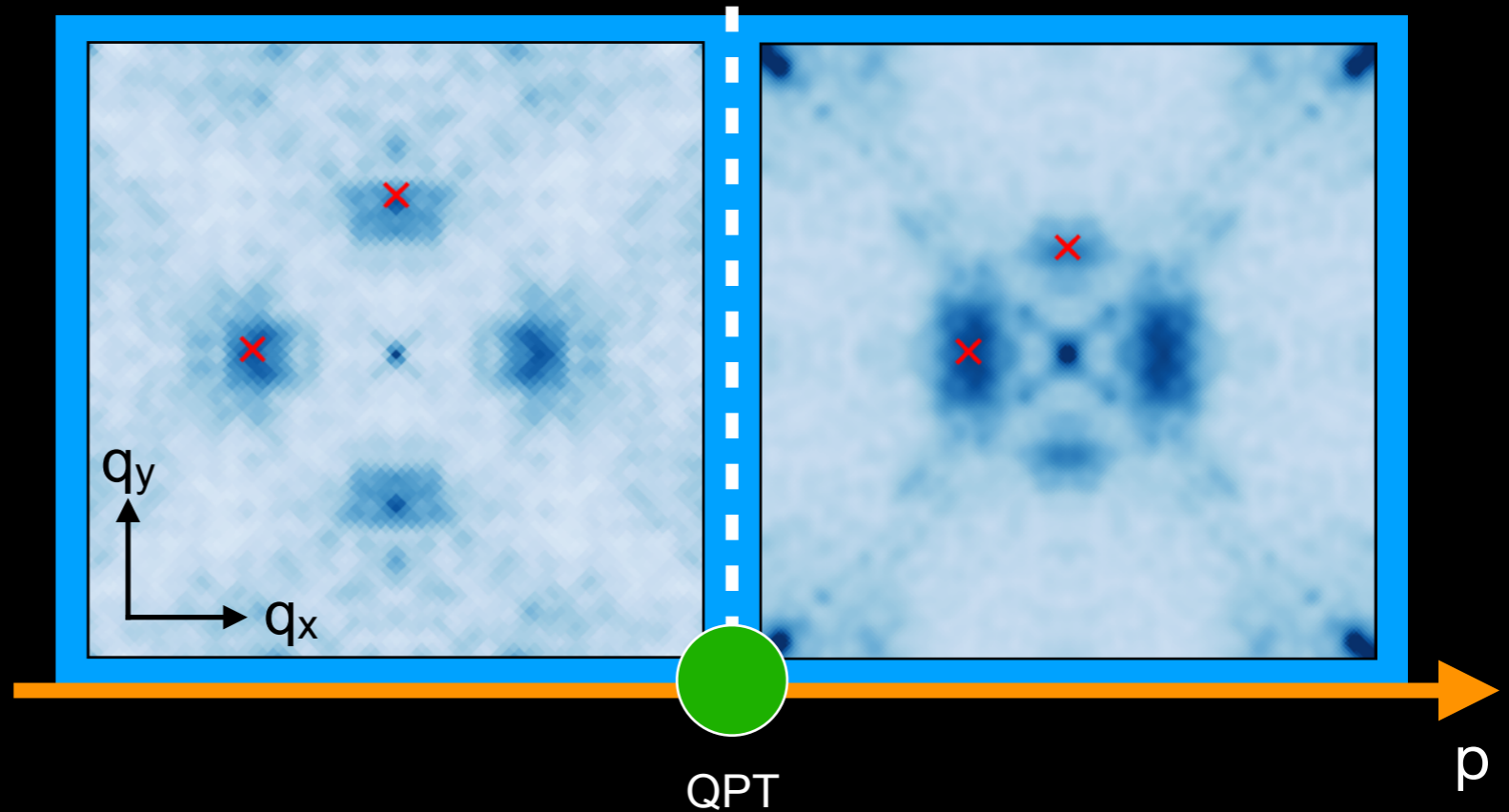
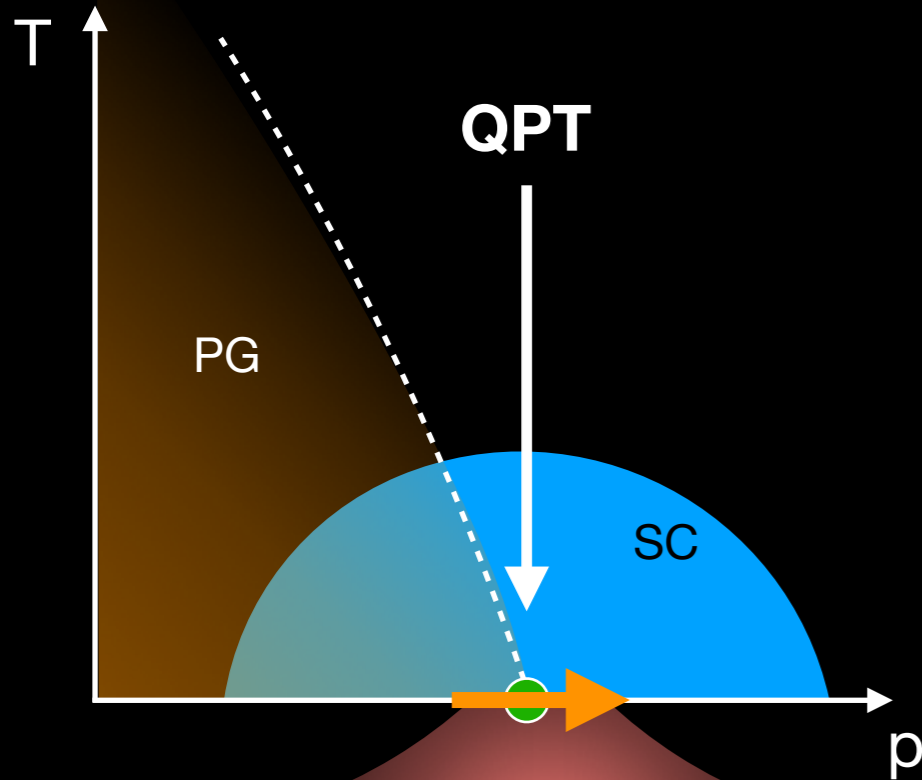


# Change in DW mechanism at cuprate QPT

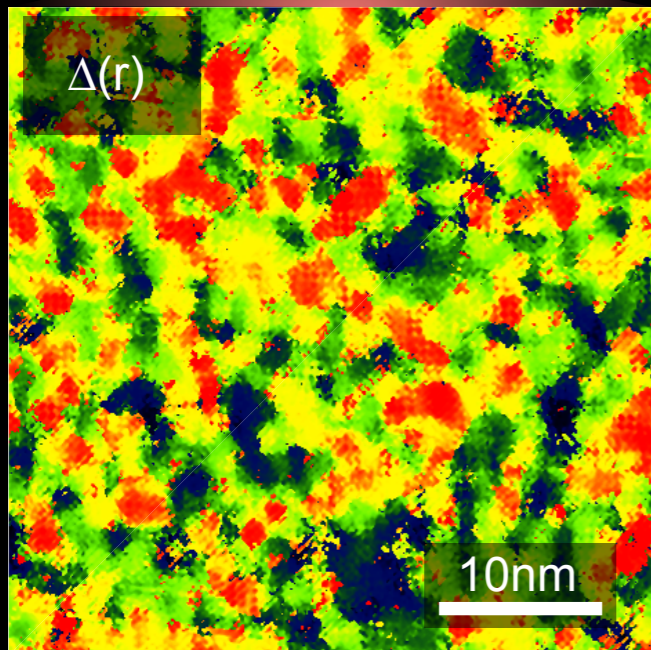
Tatiana Webb, Michael Boyer, Yi Yin, Debanjan Chowdhury, Yang He, Eric Hudson, Mohammad Hamidian, Jenny Hoffman

Local doping variations tune continuously across QPT.

Bi2201,  $T < 10$  K



Bi2201  
UD32K



**DW transition at the QPT reflects the reorganization of the electronic ground state.**