

Sensitivity of T_c to pressure and magnetic field in the cuprate superconductor $\text{YBa}_2\text{Cu}_3\text{O}_y$: Evidence of charge-order suppression by pressure

O. Cyr-Choinière,^{1,*} D. LeBoeuf,^{1,†} S. Badoux,¹ S. Dufour-Beauséjour,¹ D. A. Bonn,^{2,3} W. N. Hardy,^{2,3} R. Liang,^{2,3} D. Graf,⁴ N. Doiron-Leyraud,^{1,‡} and Louis Taillefer^{1,3,§}

¹*Institut quantique, Département de physique & RQMP, Université de Sherbrooke, Sherbrooke, Québec J1K 2R1, Canada*

²*Department of Physics and Astronomy, University of British Columbia, Vancouver, British Columbia V6T 1Z4, Canada*

³*Canadian Institute for Advanced Research, Toronto, Ontario M5G 1Z8, Canada*

⁴*National High Magnetic Field Laboratory, Florida State University, Tallahassee, Florida 32306, USA*



(Received 5 June 2018; published 30 August 2018)

Cuprate superconductors have a universal tendency to form charge density-wave (CDW) order which competes with superconductivity and is strongest at a doping $p \simeq 0.12$. Here we show that in the archetypal cuprate $\text{YBa}_2\text{Cu}_3\text{O}_y$ (YBCO) pressure suppresses charge order but does not affect the pseudogap phase. This is based on transport measurements under pressure, which reveal that the onset of the pseudogap at T^* is independent of pressure, while the negative Hall effect, a clear signature of CDW order in YBCO, is suppressed by pressure. We also find that pressure and magnetic field shift the superconducting transition temperature T_c of YBCO in the same way as a function of doping—but in opposite directions—and most effectively at $p \simeq 0.12$. This shows that the competition between superconductivity and CDW order can be tuned in two ways, either by suppressing superconductivity with field or suppressing CDW order by pressure. Based on existing high-pressure data and our own work, we observe that when CDW order is fully suppressed at high pressure, the so-called “1/8 anomaly” in the superconducting dome vanishes, revealing a smooth T_c dome which now peaks at $p \simeq 0.13$. We propose that this T_c dome is shaped by the competing effects of the pseudogap phase below its critical point $p^* \sim 0.19$ and spin order at low doping.

DOI: [10.1103/PhysRevB.98.064513](https://doi.org/10.1103/PhysRevB.98.064513)

I. INTRODUCTION

The recent observation of charge density modulations in $\text{YBa}_2\text{Cu}_3\text{O}_y$ (YBCO) [1–4], $\text{La}_{2-x}\text{Sr}_x\text{CuO}_4$ (LSCO) [5], $\text{HgBa}_2\text{CuO}_{4+\delta}$ [6], $\text{Bi}_2\text{Sr}_2\text{CuO}_{6+\delta}$ [7], and $\text{Bi}_2\text{Sr}_2\text{CaCu}_2\text{O}_{8+\delta}$ [8] shows that charge density-wave (CDW) order is a generic tendency of cuprates, not specific to materials such as $\text{La}_{2-x}\text{Ba}_x\text{CuO}_4$ (LBCO), where it has long been known to exist [9]. In Fig. 1, the onset temperature of CDW modulations seen in YBCO by x-ray diffraction, T_{XRD} , is plotted as a function of doping [10,11]. It forms a dome peaked at $p = 0.12$, as does the onset temperature of CDW order seen by nuclear magnetic resonance (NMR) (above a threshold magnetic field), T_{NMR} [12]. The Fermi surface of YBCO undergoes a reconstruction (FSR), attributed to CDW order, into small electron [13] and hole [14] pockets at low temperature. This process is detected as a downturn in the Hall coefficient $R_H(T)$ towards negative values [15], characterized by a maximum in $R_H(T)$ at a temperature T_{max} [16]. As seen in Fig. 1, T_{max} also peaks at $p = 0.12$. CDW and FSR also both peak at $p = 0.12$ in $\text{La}_{1.8-x}\text{Eu}_{0.2}\text{Sr}_x\text{CuO}_4$ [17,18].

That the CDW phase in cuprates is universally peaked at $p = 0.12$ is a striking experimental fact which naturally begs an understanding. Prior explanations in terms of a commensurate match of the CDW period with either the lattice or the hole density are no longer viable. Indeed, while in LSCO or LSCO-based materials the CDW incommensurability tracks p and the period becomes nearly commensurate with the lattice at $p \simeq 0.12$, neither of these facts are true for YBCO [10,11]. For some as yet unknown reason, the conditions for CDW formation in cuprates are most favorable at $p = 0.12$.

CDW order and superconductivity are competing phases. The x-ray intensity drops sharply below T_c [2,3], showing that superconductivity weakens CDW order in YBCO. The absence of NMR splitting under an in-plane magnetic field ($H||ab$), as opposed to an out-of-plane field ($H||c$), is another evidence of the phase competition between charge order and superconductivity [1]. Conversely, CDW order weakens superconductivity. This shows up in the doping dependence of the superconducting critical temperature T_c and upper critical field H_{c2} , as a dip in the former (Fig. 1) [19] and a local minimum in the latter [23], both centered at $p = 0.12$, where CDW order is strongest. The dip in T_c was shown to scale with the onset of FSR, closely linking the two [16]. Application of a magnetic field H restores the CDW amplitude below T_c , while it has no effect above T_c [3]. This shows that one can tune the competition between CDW order and superconductivity by applying a magnetic field.

Here we show that pressure is a second, independent tuning parameter for this competition, shifting T_c in the same way

*Present address: Yale School of Engineering and Applied Science, Yale University, New Haven, Connecticut 06511, USA.

†Present address: Laboratoire National des Champs Magnétiques Intenses, UPR 3228, (CNRS-INSA-UJF-UPS), Grenoble 38042, France.

‡nicolas.doiron-leyraud@usherbrooke.ca

§louis.taillefer@usherbrooke.ca

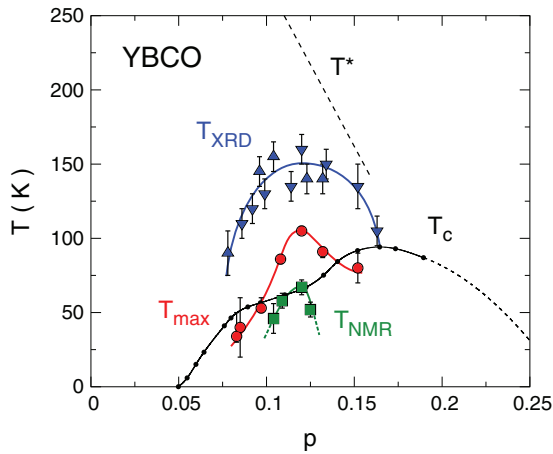


FIG. 1. Temperature-doping phase diagram of YBCO, showing the superconducting phase below T_c (black dots [19]) and the onset of charge order seen by NMR, above a threshold magnetic field, below T_{NMR} (green squares [12]). CDW modulations are detected by x-ray diffraction below T_{XRD} (up triangles [10]; down triangles [11]). The Fermi surface undergoes a reconstruction seen as a downturn in the Hall coefficient below T_{max} (red dots [16]). T^* marks the onset of the pseudogap phase (dashed line [20,21]). Full lines are guides to the eye.

as the magnetic field, as a function of doping, but in the opposite direction. Therefore, pressure is seen as a tuning parameter that weakens CDW order, with little direct effect on superconductivity or on the pseudogap phase. Following our initial report of these observations [24], recent x-ray studies observe that pressure suppresses CDW order in YBCO [25,26]. As a result, the increase of T_c with pressure is a consequence of competition between superconductivity and charge order. By applying sufficiently large pressures one can fully suppress CDW order and obtain the superconducting phase diagram free of competition which, based on existing data, displays a T_c dome peaked at $p \simeq 0.13$ and not at $p = 0.16$. The fact that both CDW order and superconductivity peak around the same doping in the absence of mutual competition suggests that some competing mechanism from another origin acts to suppress both at low doping. Identifying this mechanism will be key to understanding the cuprate phase diagram.

II. METHODS

Single crystals of $\text{YBa}_2\text{Cu}_3\text{O}_y$ were prepared as described elsewhere [27], with oxygen content y ranging from $y = 6.35$ to $y = 6.998$. The hole concentration (doping) p of each sample is given by its superconducting critical temperature T_c [19]. T_c was determined from measurements of the electrical resistivity $\rho(T)$ or Nernst signal $N(T)$ in $H = 0$ and 15 T (applied along the c axis of the orthorhombic structure), giving $T_c(H = 0)$ and $T_c(H = 15 \text{ T})$ as the temperature below which ρ and N are zero. The values of y , p , $T_c(H = 0)$ and $T_c(H = 15 \text{ T})$ for our YBCO samples are listed in Table I in the Appendix. This includes a sample with 1.4% of Ca substitution (at $y \simeq 7$), for which $p = 0.19$.

The a -axis electrical resistivity $\rho_a(T)$ at ambient and high pressure, in $H = 0$ and 15 T, was measured at Sherbrooke

on three single crystals with a high degree of oxygen order: (1) $y = 6.50$, $T_c(0) = 54.5 \text{ K}$, $p = 0.090$ (ortho-II); (2) $y = 6.54$, $T_c(0) = 60.2 \text{ K}$, $p = 0.107$ (ortho-II); and (3) $y = 6.67$, $T_c(0) = 65.3 \text{ K}$, $p = 0.119$ (ortho-VIII). The Hall coefficient $R_H(T) = \rho_{ab}(T)/H$ at ambient and high pressure, and magnetic fields up to $H = 35 \text{ T}$, was measured at the National High Magnetic Field Laboratory in Tallahassee on two single crystals with high oxygen order: (1) $y = 6.54$, $T_c(0) = 61.3 \text{ K}$, $p = 0.109$ (ortho-II) and (2) $y = 6.67$, $T_c(0) = 66.0 \text{ K}$, $p = 0.120$ (ortho-VIII). The samples were pressurized using a nonmagnetic piston-cylinder clamp cell with either a 1/1 mixture of pentane and 3-methyl-1-butanol or 7373 Daphne oil as the pressure medium, ensuring a hydrostatic pressure during pressurization. The pressure was determined from the superconducting transition of a lead gauge or from the fluorescence of a ruby chip. Note that pressure can enhance oxygen order in YBCO, and oxygen ordering increases the doping in the CuO_2 planes (see Sec. III D). To avoid this, one should apply pressure at temperatures below $\sim 200 \text{ K}$ [28,29]. Another (simpler) way is to start with oxygen-ordered samples, apply the pressure at room temperature, and rapidly cool the samples (< 2 hours at 300 K) to avoid relaxation effects. This is the approach we used.

III. EFFECT OF PRESSURE

A. Electrical resistivity

In Figs. 2(a), 2(c) and 2(e), the electrical resistivity $\rho_a(T)$ of our three oxygen-ordered YBCO samples is plotted as a function of temperature, for different values of the applied pressure. In Figs. 2(b), 2(d) and 2(f), we show the resistivity normalized at $T = 275 \text{ K}$. We see that above 150 K and for all three dopings, pressure has essentially no effect on the functional form of $\rho_a(T)$ and only induces a slight reduction in amplitude. At $p = 0.107$ and 0.119, the data exhibit a linear- T regime at high temperature, followed by a drop below linearity at T^* , a clear signature of the pseudogap phase [30]. At $p = 0.090$, T^* is above 300 K [20] which is too high to lend a clear linear- T regime within our experimental range, but the normalized curves all fall on top of each other. The fact that both T^* and the subsequent drop are insensitive to pressure shows that in YBCO the pseudogap itself is not affected by pressure in this doping range. As shown in Figs. 2(g) and 2(h), the same holds true in $\text{YBa}_2\text{Cu}_4\text{O}_8$ ($p = 0.14$), measured up to 10 GPa [22], suggesting that this conclusion is valid up to such high pressures. In the related system $\text{La}_{1.6-x}\text{Nd}_{0.4}\text{Sr}_x\text{CuO}_4$ (Nd-LSCO) where a departure from linear- T resistivity [31] is unambiguously connected to the pseudogap opening as seen in angle resolved photoemission spectroscopy data [32], the pseudogap was also found to be independent of pressure close to $p = 0.15$ [33]. (In Nd-LSCO, pressure tunes the pseudogap critical point p^* down but does not affect T^* at dopings well below p^* [33].) Note that NMR data on the cuprate $(\text{Ca}_x\text{La}_{1-x})(\text{Ba}_{1.75-x}\text{La}_{0.25+x})\text{Cu}_3\text{O}_y$, where Ca doping modifies the lattice parameters and acts as internal pressure while keeping hole doping constant, showed that this internal pressure does not affect the pseudogap temperature T^* but changes T_c [34], consistent with our interpretation. Going to lower temperatures below T_{XRD} [Figs. 2(b), 2(d) and 2(f)],

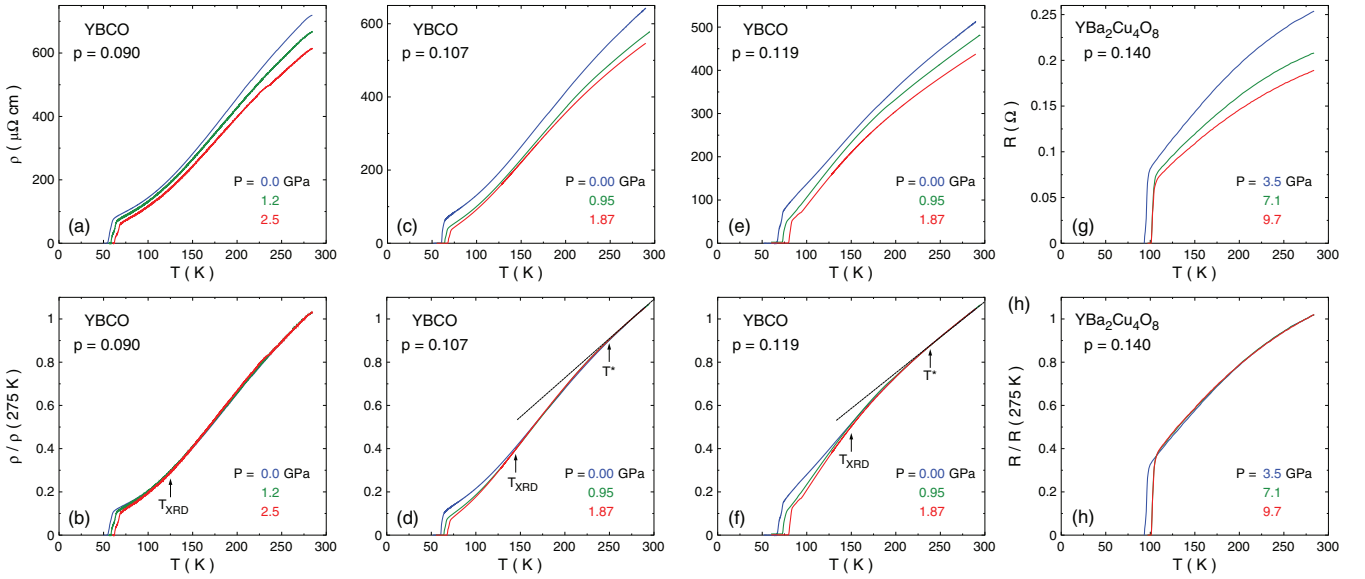


FIG. 2. a -axis electrical resistivity $\rho_a(T)$ of YBCO as a function of temperature at dopings and pressures as indicated. The top panels show the $\rho_a(T)$ [or the resistance $R(T)$ for panel (g)]. The bottom panels show $\rho_a(T)$ [$R(T)$] normalized by its value at $T = 275$ K. The data in panels (g) and (h) are reproduced from Ref. [22], on $\text{YBa}_2\text{Cu}_4\text{O}_8$ with $p = 0.14$ ($T_c = 80$ K), which is stoichiometric with perfect oxygen order. In panels (d) and (f), the straight line is a linear fit to the data at high temperature. The pseudogap temperature T^* (arrow) is defined as the temperature below which $\rho_a(T)$ deviates from its linear dependence at high temperature [20,21]. Note that $T^* > 300$ K for $p = 0.090$ [20]. The absence of linearity in $\text{YBa}_2\text{Cu}_4\text{O}_8$ [panels (g) and (h)] may come from measurements on a twinned sample with randomly oriented domains. The important aspect is that there is no change in the functional form of $R(T)$ in $\text{YBa}_2\text{Cu}_4\text{O}_8$ up to 10 GPa. T_{XRD} marks the onset of CDW modulations seen in x -ray diffraction at the corresponding doping (see Fig. 1). The normalized resistivity is affected by pressure only below T_{XRD} .

our data now reveal changes in $\rho_a(T)$ which we attribute to the CDW and which we discuss below in the light of normal-state Hall effect measurements.

B. Hall effect

In YBCO, a clear consequence of the CDW is the fact that the Fermi surface is reconstructed at low temperatures. This FSR was first established through quantum oscillation measurements [13,35,36], which revealed a small Fermi surface, and Hall effect data, which showed that the Hall coefficient R_H is negative [15] and therefore that the Fermi surface is electronlike. This is shown in Figs. 3(b) and 3(d) where we plot R_H at low temperature for YBCO at $p = 0.109$ and 0.120. As a function of temperature, the Hall effect is positive at high temperature, reaches a maximum at a temperature T_{max} , and then falls rapidly to negative values because of FSR by the CDW [16]. In Fig. 1 we reproduce T_{max} as a function of doping from Ref. [16] and see that it forms a dome that peaks near $1/8$ and correlates with the presence of the CDW. A negative Hall signal is only observed over the doping range where CDW order is seen by x rays [10,11], above $p = 0.08$ [16] and below $p = 0.16$ [37]. The amplitude of the negative R_H was also shown to be maximal where CDW is strongest [10,16] and where the dip in T_c is more pronounced [16]. Consequently, in YBCO R_H is a reliable marker of the CDW phase. In Fig. 3 we show its evolution as a function of pressure for $p = 0.109$ and 0.120. In Figs. 3(a) and 3(c), we plot a set of representative isotherms at ambient pressure and 1.8 GPa, down to 10 K and at fields up to 34 T, which is sufficient to reach the normal state value [23] (at ambient pressure). In the bottom panels we show

the normal-state R_H at 34 T as a function of temperature. At $p = 0.120$ we see that pressure has a large effect on both the

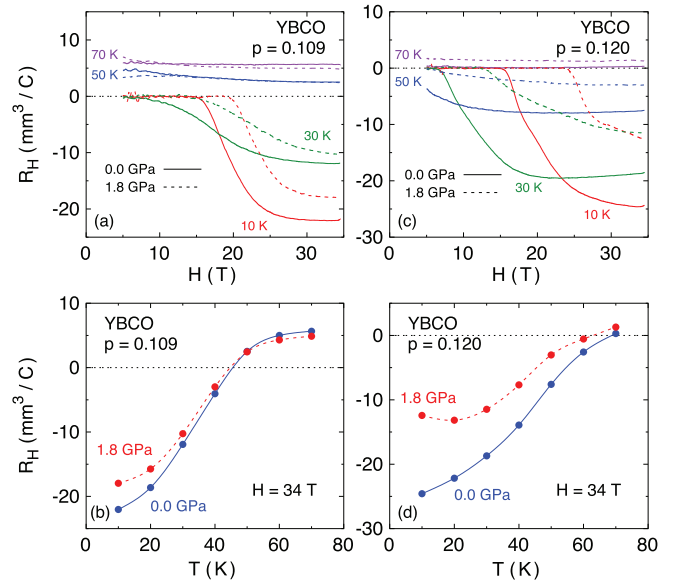


FIG. 3. Hall coefficient R_H of YBCO at dopings and pressures as indicated. In panels (a), (c) we show R_H as a function of field at temperatures as indicated. In panels (b), (d) we show R_H as a function of temperature from our data at $H = 34$ T. In all panels the full lines are data at ambient pressure and dashed lines are data at 1.8 GPa. Note that the slight upturn at 10 K and $p = 0.120$ (d) is an artefact caused by superconductivity, as R_H has not fully transitioned (saturated) to the normal state value at 34 T [red dashed line in (c)].

amplitude of R_H and the temperature at which it changes sign, suppressing both quantities significantly. The same is observed at $p = 0.109$ albeit in a much reduced fashion.

We interpret this reduction in the amplitude of the negative R_H as a clear signature of the suppression of the CDW by pressure. As discussed below, doping is also affected by pressure, but the change in R_H seen here cannot be explained by that alone. At $p = 0.120$ and 20 K, we see a relative change $\Delta R_H/R_H = (R_H(1.8\text{GPa}) - R_H(0\text{GPa}))/R_H(0\text{GPa})$ of about 40%. According to R_H data as a function of doping in YBCO [16], this would require a change in doping larger than $\Delta p = 0.012$ if that was the sole effect. This is much larger than the actual change in doping induced by 1.8 GPa, estimated to be $\Delta p = 0.002$ at $p = 0.120$ (see Sec. III D below). We therefore conclude that pressure suppresses the CDW phase. This is consistent with direct observations of the CDW by x-ray measurements on YBCO [25,26], which also found that the CDW disappears under pressure. We note that 1.0 GPa appears sufficient to fully suppress the CDW signature in x-ray [25] at $p \sim 0.105$ while R_H remains negative up to at least 1.8 GPa, presumably because CDW fluctuations survive up to much higher pressure and can still cause a FSR.

Recent Hall effect measurements on YBCO at $p = 0.11$ up to 2.6 GPa revealed a very weak effect of pressure on R_H [38], which led the authors to conclude that the CDW is only weakly affected by pressure. This is consistent with our observation that the effect of pressure is much weaker at $p = 0.109$ than at $p = 0.120$, which we explain as follows. Pressure suppresses the CDW dome at all dopings across the phase diagram, which should suppress the negative R_H . At the same time, pressure increases the doping (see Sec. III D) and since the CDW dome is peaked at $p = 0.12$, a slight increase in doping from $p = 0.11$ should make R_H more negative. The two effects therefore balance each other at $p = 0.11$. At $p = 0.12$, however, they reinforce each other, hence the much greater sensitivity of R_H under pressure. We note that our $p = 0.109$ sample has a $T_c = 61.3$ K, which is slightly higher than the $T_c = 60.7$ K reported in Ref. [38], consistent with the fact that they observe an even weaker effect of pressure on R_H . A simple test would be to apply more pressure to their sample with $p = 0.11$, thereby tuning p beyond 0.12: R_H should rapidly become less negative, as we find in our sample with $p = 0.120$.

C. Superconducting T_c

In contrast to T^* , pressure has a large effect on T_c . In Fig. 4(a), we plot the pressure dependence of T_c for our samples whose resistivity data are shown in Fig. 2. The slope dT_c/dP has a positive value, of magnitude 3.0 ± 0.2 , 3.5 ± 0.4 , and 7.5 ± 0.5 K/GPa for $p = 0.090$, 0.107, and 0.119, respectively. Figure 4(b) displays these measured values of dT_c/dP (open red circles) as a function of doping, and they show a good agreement with published data obtained by applying pressure at low temperature (open blue circles). This confirms that our samples are negligibly affected by oxygen-ordering effects, but still raises the relevance of discussing the effect of pressure on doping in YBCO.

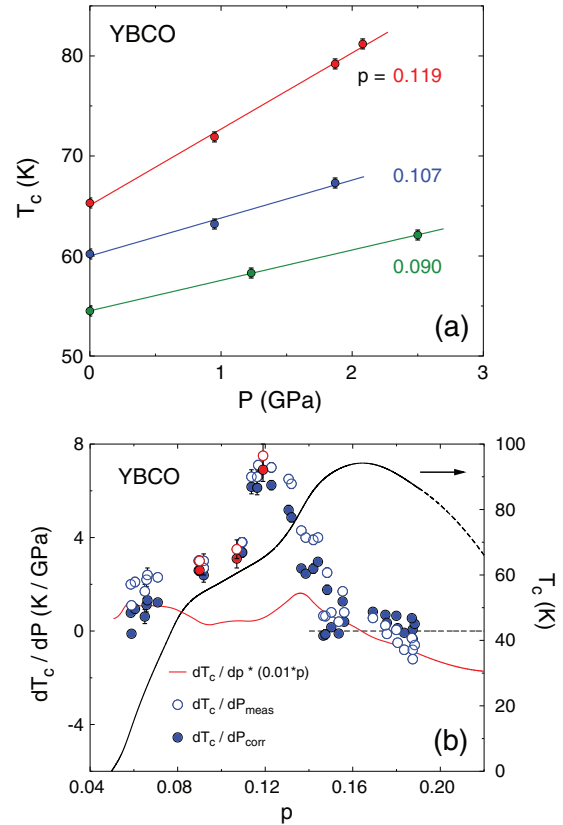


FIG. 4. (a) Superconducting T_c of our YBCO samples with dopings as indicated as a function of pressure (applied at room temperature). T_c is obtained from the resistivity data in Fig. 2. (b) Sensitivity of T_c to pressure P in YBCO, defined as dT_c/dP , the initial slope in the T_c vs P dependence, as a function of doping p . The data points come from the literature (blue circles and dots; see Table II and references therein) and from our own measurements [red circles and dots; data from panel (a)]. Two quantities are plotted: (1) the measured values of dT_c/dP [labeled $(dT_c/dP)_{\text{meas}}$; open circles]; (2) the corrected values [labeled $(dT_c/dP)_{\text{corr}}$; full dots]. The corrected data are obtained via $(dT_c/dP)_{\text{corr}} = (\partial T_c/\partial P)_p = (dT_c/dP)_{\text{meas}} - 0.01p(dT_c/dp)$ (see Table II and Sec. III D). The red line is the magnitude of the correction, with $(\partial T_c/\partial p)_p$ being the derivative of the T_c vs p curve (black line; right axis). The horizontal dashed line marks $(dT_c/dP)_{\text{corr}} = 0$.

D. Hole doping

There are two mechanisms by which pressure increases doping in YBCO. The first, previously mentioned, has to do with the rearrangement of oxygen atoms in the CuO chains. Pressure improves the degree of oxygen order. With oxygen ordering comes an enhanced charge transfer between CuO chains and CuO₂ planes and hence an increased doping of holes into the planes. This has been studied in detail (e.g., Ref. [29]), and there are two approaches to eliminate this ordering process: (1) apply pressure at a temperature of 200 K or lower (to freeze oxygen movement in the chains); (2) use samples that already have a high degree of oxygen order.

In Table II, we collect published data on the suppression of T_c with pressure P , specifically the rate dT_c/dP , only for those studies that have used one or the other of these approaches to

ensure that no oxygen relaxation effects take place. For dopings higher than $p = 0.15$, in the range where no superstructure is favored, these precautions are not necessary. To the long list of published data in Table II, we add our three data points on oxygen-ordered samples [from Fig. 4(a)] and they fit very well with the other published data [Fig. 4(b)].

The second mechanism by which pressure increases doping is one that cannot be avoided. By bringing the chains closer to the planes, charge transfer is improved and hole doping is increased. The variation of T_c with pressure therefore includes two terms [39,40]:

$$\frac{\partial T_c}{\partial P} = \frac{\partial p}{\partial P} \left(\frac{\partial T_c}{\partial p} \right)_p + \left(\frac{\partial T_c}{\partial P} \right)_p. \quad (1)$$

The term on the left of the equation is the raw ‘‘sensitivity to pressure,’’ as measured in the experiment. The first term on the right represents the doping effect of pressure and the second term is the direct (intrinsic) dependence of T_c on P , of interest here. Fortunately, the first term is small. In Fig. 4(b), we plot that raw $\partial T_c / \partial P$ (referred as dT_c / dP_{meas}) vs doping p (open circles) (see Table II). We immediately see a sharp peak at $p = 0.12$. To investigate the effect of pressure-induced doping on these data, we plot a corrected set of data, obtained by subtracting the product of $\partial p / \partial P$ and $(\partial T_c / \partial p)_p$ [first term on the right side of Eq. (1)]. The term $\partial p / \partial P$ represents the charge transfer (doping) rate, from chains to planes, as pressure is increased. Since this rate should depend on the initial doping p (e.g., charge transfer will be greater for highly doped chains than lightly doped), we assume that $\partial p / \partial P$ varies linearly with p . We then fix the prefactor by requiring that $(\partial T_c / \partial P)_p = 0$ for $p \geq 0.16$, in the overdoped region. This is based on our assumption that the small negative values of $\partial T_c / \partial P$ measured at $p > 0.16$ are purely due to the doping effect, since $(\partial T_c / \partial p)_p < 0$ on the downward sloping side of the T_c vs p curve. This yields $\partial p / \partial P = 0.01 * p$ hole/GPa. As for $(\partial T_c / \partial p)_p$, it is simply the derivative of the T_c vs p curve (black curve in Fig. 1). The resulting product term $\partial p / \partial P * (\partial T_c / \partial p)_p$ is plotted as the red line in Fig. 4(b) and its subtraction from the measured $\partial T_c / \partial P$ corresponds to the corrected data $(\partial T_c / \partial P)_p$, plotted as full dots. We see that the correction is small everywhere. The doping dependence of the corrected $(\partial T_c / \partial P)_p$ is also plotted in Fig. 7 as blue circles. Since these doping effects of pressure directly come from the presence of chains and their doping role in the plane, they should be absent in chainless cuprates [41–44].

In summary, both the measured dT_c / dP and the corrected $(\partial T_c / \partial P)_p$ peak sharply at $p = 0.12$ [Fig. 4(b)], as noted earlier [45]. The dramatic increase in dT_c / dP between $p \simeq 0.11$ and $p \simeq 0.12$ [Fig. 4(a)], previously detected in thermal expansion measurements at ambient pressure [46], signals a rapid change in the properties of YBCO near $p = 0.12$. Note also that T_c is enhanced by pressure only below $p \simeq 0.16$. Given that CDW order (as detected by x-ray diffraction) onsets below $p \simeq 0.16$ [11] and peaks at $p = 0.12$ (Fig. 1), we attribute the pressure enhancement of T_c to a suppression of the competing CDW order. This interpretation is confirmed by looking at the effect of a magnetic field, an established tuning parameter for this phase competition [3,10,11].

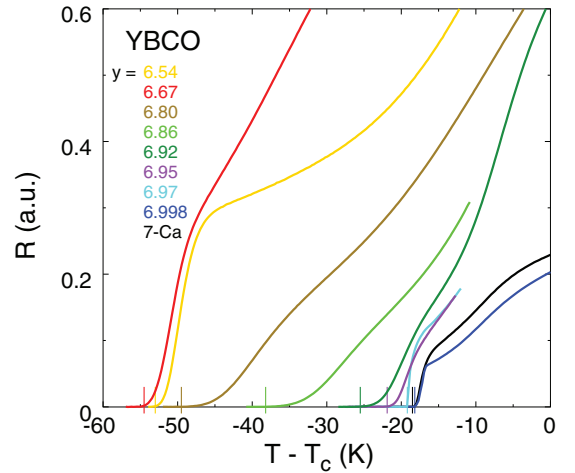


FIG. 5. Electrical resistance of YBCO with oxygen contents y as indicated, in $H = 15$ T, plotted versus $T - T_c$, where $T_c = T_c(0)$ is the zero-field superconducting transition temperature. The shift in T_c caused by the field, $\Delta T_c = T_c(0) - T_c(15 \text{ T})$, is marked by a short vertical line and is a measure of the sensitivity to field, defined as $-dT_c/dH = \Delta T_c / 15 \text{ T}$. All values of $T_c(0)$, $T_c(15 \text{ T})$, and $\Delta T_c / 15 \text{ T}$ are listed in Table I.

IV. EFFECT OF MAGNETIC FIELD

The sensitivity of the superconducting transition temperature T_c to a magnetic field H applied along the c -axis was studied across the doping range of YBCO, from $p \simeq 0.06$ to $p \simeq 0.19$. Using either resistivity (Fig. 5) or Nernst effect data (Fig. 6), the amount dT_c by which T_c is reduced when a field of 15 T is applied was measured on different single crystals (see Table I). The sensitivity to field, defined as $-dT_c/dH = [T_c(H = 0) - T_c(H = 15 \text{ T})] / 15 \text{ T}$, is plotted in Fig. 7.

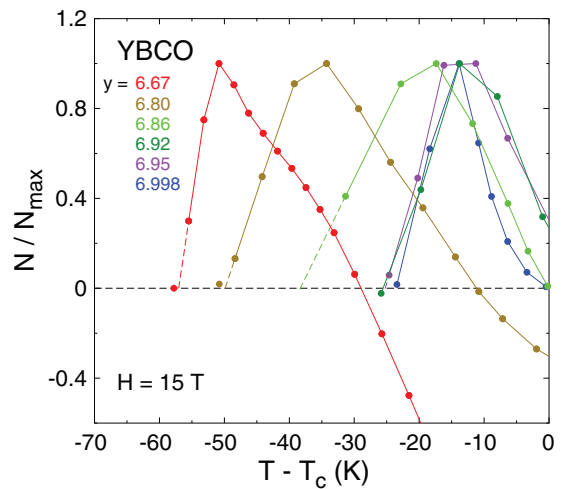


FIG. 6. Nernst effect of YBCO for six of the samples whose resistance data are shown in Fig. 5, in $H = 15$ T, plotted versus $T - T_c$. $T_c(15 \text{ T})$ is defined as the point where $N = 0$, indicated by the linear extrapolations (dashed lines). The corresponding values are listed in Table I. Details on Nernst effect measurements can be found in Ref. [21].

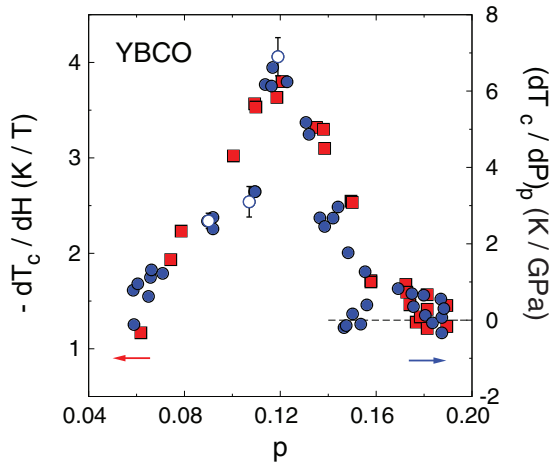


FIG. 7. Sensitivity of T_c to pressure and magnetic field in YBCO as a function of doping. The sensitivity to pressure is defined as the positive change dT_c induced by a small pressure dP (at constant p), plotted as $(\partial T_c / \partial P)_p$ vs p (blue dots, right axis; see Table II in the Appendix). Open circles with error bars are from our own data [see Fig. 4(a)]; full circles are from published data (Fig. 4 and Table II in the Appendix). To get $(\partial T_c / \partial P)_p$, a small doping-dependent correction is applied to the measured dT_c/dP , that accounts for the increase in doping, and hence in T_c , due to pressure (see Sec. III D). The dashed line marks $(\partial T_c / \partial P)_p = 0$. The sensitivity to field is defined as the negative shift dT_c in T_c in 15 T: $-dT_c/dH = [T_c(H=0) - T_c(H=15\text{ T})]/15\text{ T}$ (red squares, left axis; Table I in the Appendix).

We see that it is small and flat above $p = 0.16$, it rises rapidly below $p = 0.16$, to reach a maximum at $p = 0.12$, and then decreases at lower p . So $-dT_c/dH$ vs p peaks at $p = 0.12$. This is not surprising, since we know that H_{c2} vs p has a local minimum at $p \simeq 0.12$ [16,23]. Note also that T_{XRD} intersects T_c at $p \simeq 0.16$ (Fig. 1), thereby explaining the low sensitivity at $p > 0.16$. All this confirms that superconductivity is weakened when CDW order grows, consistent with the scenario of phase competition discussed above.

V. DISCUSSION

In Fig. 7, we see that $(\partial T_c / \partial P)_p$ and $-dT_c/dH$ track each other: Both are small and flat for $p > 0.16$, both rise rapidly below $p = 0.16$, and both peak at $p = 0.12$. The two sensitivities look so identical as a function of doping because H and P are pure tuning parameters: H does not directly couple to CDW order (which is independent of H above T_c [3]) and P does not directly couple to superconductivity ($\partial T_c / \partial P \sim 0$ at $p > 0.16$). Field and pressure are two complementary parameters with which to tune phase competition between CDW order and superconductivity in YBCO, in opposite directions. This is consistent with our interpretation that pressure suppresses CDW order in YBCO, as shown by x-ray studies in underdoped YBCO [25,26]. We mention that the same is seen in LBCO at $p = 0.125$, with pressure suppressing CDW order and raising T_c [44].

We therefore expect that a sufficiently strong pressure will suppress CDW order entirely and reveal the superconducting phase diagram of YBCO free of competition. To examine this

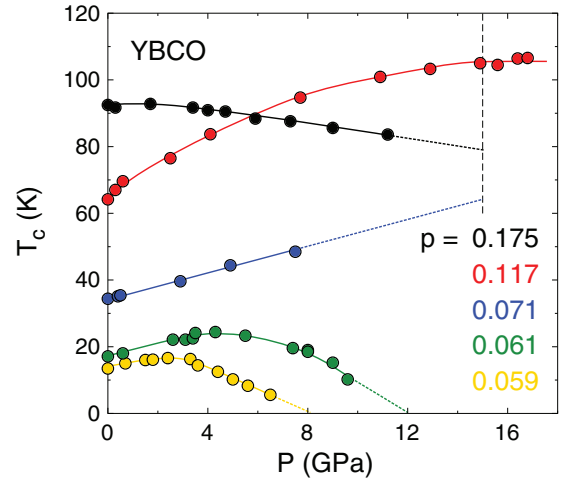


FIG. 8. Superconducting T_c versus pressure in YBCO for dopings as indicated, reproduced from Ref. [29]. Note that to avoid relaxation effects due to oxygen ordering, the pressure was applied at low temperature. Full lines are a guide to the eye. We extract the values of T_c at $P = 2$ and 7.5 GPa by taking cuts, and at $P = 15$ GPa (vertical dashed line) by extrapolating the data (dotted lines). The values of T_c thus obtained are plotted in Fig. 9, with the doping adjusted to account for pressure effects. The zero-pressure values of T_c are (from bottom to top): $T_c(0) = 14.2$ (yellow), 17.5 (green), 34.1 (blue), 63.7 (red), and 92.3 K (black) [29].

scenario, we reproduce in Fig. 8 the data for T_c in YBCO as a function of pressure up to 17 GPa and over a wide range of doping as measured by Sadewasser *et al.* [29]. Taking the measured T_c at $P = 2$ and 7.5 GPa, we show in Fig. 9 the evolution of the T_c dome with pressure. To obtain the T_c dome in the high pressure limit, we take the measured value at 15 GPa

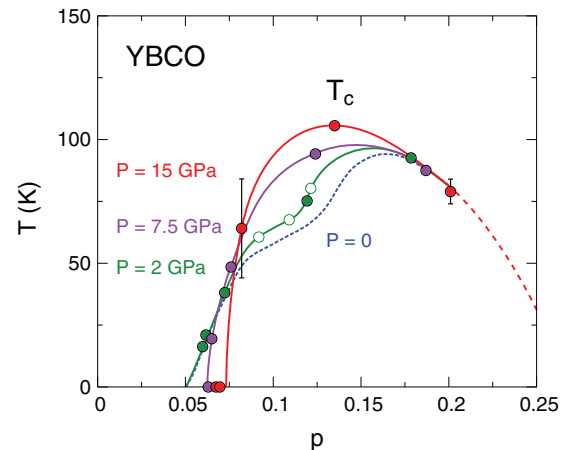


FIG. 9. Superconducting phase diagram of YBCO, showing T_c at $P = 0$ (dashed blue line; same as Fig. 1 [19]), $P = 2$ GPa [green open circles, from our data in Fig. 4(a); green dots, from Ref. [29] (see Fig. 8)] and $P = 7.5$ GPa [purple dots, from Ref. [29] (see Fig. 8)]. T_c measured at, or extrapolated to, $P = 15$ GPa is shown as red dots [from Ref. [29] (see Fig. 8)]. The doping values have been adjusted to include the effect of pressure (see Sec. III D). The green, purple, and red lines are guides to the eye.

for $p = 0.117$ where T_c saturates and linearly extrapolate for the four other dopings shown in Fig. 8. For the highest doping (black; $p = 0.175$), the linear extrapolation is reasonable and the uncertainty is small, so that $T_c(15 \text{ GPa}) = 80 \pm 5 \text{ K}$. Note that a recent study reports a linear decrease of T_c with pressure in overdoped $\text{YBa}_2\text{Cu}_3\text{O}_7$ leading to a complete suppression above $\sim 10 \text{ GPa}$ [47]. For the lowest two dopings, it is clear that $T_c(15 \text{ GPa})=0$ regardless of how one extrapolates to 15 GPa. The only significant uncertainty is on the sample with $p = 0.071$ (blue), whose data stop at 8 GPa. The dependence of T_c between 8 GPa and 15 GPa could be quite different from the linear extrapolation shown in Fig. 8. To reflect that uncertainty, we assign a large error bar to that point, namely $T_c(15 \text{ GPa})=63 \pm 20 \text{ K}$. This large uncertainty has little impact on the superconducting dome displayed in Fig. 9. In particular, the position of the peak in the dome of T_c vs p at 15 GPa must necessarily be in the interval $0.08 < p < 0.13$, most likely close to 0.13.

In Fig. 9, we summarize those T_c data at $P = 2, 7.5$ and 15 GPa and plot them as a function of doping. Note that in order to obtain the doping values under pressure, we use the following formula: $p(P) = p(0) + 0.01 * p * P$ (see Sec. III D), where $p(0)$ is the doping value at ambient pressure. For instance, for $p(0) = 0.117$, $p(15 \text{ GPa}) = 0.135$. Therefore, as a primary effect (even without considering superconductivity), pressure changes the phase diagram of YBCO by increasing doping. More significantly, we see that when CDW order is removed, the superconducting phase in the temperature-doping diagram of YBCO is transformed in two important ways. First, the dip at $p \simeq 0.12$ gradually goes away, so that by $P = 15 \text{ GPa}$, T_c forms a dome peaked at $p \simeq 0.13$. Indeed, the fact that T_c for $p(0) = 0.117$ becomes flat above 15 GPa (Fig. 8) implies that it has reached its maximal value of $T_c=105 \text{ K}$ and shows that the peak in the dome of T_c vs p at 15 GPa must be at $p(15 \text{ GPa}) = 0.135$ or lower. [We note that 15 GPa far exceeds the pressure at which the CDW signal in x ray is suppressed ($\sim 1.0 \text{ GPa}$) at $p \sim 0.105$ [25]. Nevertheless, the fact that T_c at $p(0) = 0.117$ keeps evolving above 1.0 GPa is consistent with the fact that R_H is negative at 1.8 GPa: Both show that the effects of the CDW persist to pressures well above 1.0 GPa.] Secondly, the foot of the dome at low doping moves up, from $p = 0.05$ to $p \simeq 0.075$. As a result, the fall of T_c with decreasing p is much faster than it was at ambient pressure (Fig. 9). At $P = 0$, T_c falls below $p \simeq 0.16$ because a competing phase of CDW order sets in below a $T = 0$ critical point at $p \simeq 0.16$ [37]. At $P = 15 \text{ GPa}$, this CDW critical point is removed (possibly), yet T_c is still a dome, now falling below $p \simeq 0.13$. What competing phase, resistant to pressure, is causing that fall? Let us mention two possible scenarios.

The first scenario is spin order. In YBCO at ambient pressure, long-range antiferromagnetic order exists up to $p = 0.05$ and short-range incommensurate spin-density-wave (SDW) correlations extend up to $p \simeq 0.08$ [48]. CDW, SDW, and superconducting phases all compete with each other [49]. By suppressing CDW order, pressure could strengthen SDW order, extend its range up to higher p , and stiffen its competing effect on superconductivity at low doping. Adding Zn impurities in YBCO has shown to suppress superconductivity, e.g., at $p \simeq 0.12$, but to also suppress CDW order, and to nucleate SDW order [49]. Note however that muon spin rotation studies in

LBCO showed that hydrostatic pressure suppressed magnetic order (SDW) while enhancing superconducting fraction [50].

A second scenario for a competition that persists at high pressure is the pseudogap phase. In particular, the pseudogap due to strong correlations associated with the Mott insulator is known to compete with superconductivity [51,52] and to produce a dome of T_c vs p [53]. It remains to be seen where in doping the peak in T_c lies with respect to the T^* line and the underlying critical point for the transition from Fermi-liquid phase at high p to pseudogap phase at low p [54,55]. We propose that both competing effects shape the CDW-free T_c dome: the pseudogap phase below its critical point $p^* \sim 0.19$ and spin order at low doping.

In any scenario, two questions must be addressed: Why does a dome of CDW order peak at $p \simeq 0.12$? Why does pressure have such a strong detrimental effect on CDW order, while it has little direct effect on either superconductivity or the pseudogap phase? Note that in the present paper we focused on the short-range 2D CDW order present in zero (and low) magnetic field, which was shown to cause the FSR [56]. In future investigations, the pressure dependence of the long-range 3D CDW order seen in high fields [57,58] should also be examined separately.

VI. SUMMARY

Over the years, the numerous studies of the effect of pressure on T_c in YBCO have collectively revealed a complex behavior that has remained a mystery. A crucial piece of information that had been missing until recently to make sense of the apparent complexity is the existence of a dome of CDW order in YBCO. Here we showed that magnetic field and pressure shift T_c in the same way as a function of doping, but in opposite directions, and conclude that they are two independent parameters with which to tune the competition between superconductivity and CDW order in YBCO. This is likely the reason why the record T_c in cuprate superconductors was reached by applying pressure [59]. In YBCO at high pressures, when CDW order is removed, the superconducting dome of T_c vs p is seen to peak at $p \simeq 0.13$, revealing that another competing mechanism is at play at low doping. We propose that this T_c dome is shaped by the competing effects of the pseudogap phase below $p^* \sim 0.19$ and spin order at low doping.

ACKNOWLEDGMENTS

We thank J. Corbin, M.-È. Delage, G. Grissonnanche, E. Hassinger, F. Laliberté, S. René de Cotret, and F. F. Tafti for their assistance with the experiments, and B. J. Ramshaw for his assistance with sample preparation. A portion of this work was performed at the National High Magnetic Field Laboratory, which is supported by National Science Foundation Cooperative Agreement No. DMR-1157490 and the State of Florida. O.C.-C. was supported by a fellowship from the Natural Sciences and Engineering Research Council of Canada (NSERC). L.T. thanks ESPCI-ParisTech, Université Paris-Sud, CEA-Saclay and the Collège de France for their hospitality and support, and the European Research Council (Grant No. ERC-319286 QMAC) and LABEX PALM (ANR-10-LABX-0039-PALM) for their support, while this paper was written.

D.A.B., W.N.H., and R.L. acknowledge funding from the Natural Sciences and Engineering Research Council of Canada (NSERC). L.T. acknowledges support from the Canadian Institute for Advanced Research (CIFAR) and funding from the Natural Sciences and Engineering Research Council of Canada (NSERC; PIN:123817), the Fonds de recherche du Québec - Nature et Technologies (FRQNT), the Canada Foundation for Innovation (CFI), and a Canada Research Chair. Part of this work was funded by the Gordon and Betty Moore Foundation's EPiQS Initiative (Grant No. GBMF5306 to L.T.).

APPENDIX

Tables I and II below present the raw values of the data points plotted in Figs. 4(b) and 7.

TABLE I. Characteristics of the YBCO samples whose sensitivity of T_c to field is plotted in Fig. 7, labeled by their oxygen content y , doping p , zero-resistance T_c at $H = 0$ and $H = 15$ T, from resistivity (Fig. 5) or Nernst (Fig. 6) data. $\Delta T_c = T_c(H = 0) - T_c(H = 15 \text{ T})$; $-dT_c/dH = \Delta T_c/15 \text{ T}$. The numbers in the last column are plotted as red squares in Fig. 7.

p	y	$T_c(0)$ (K)	$T_c(15 \text{ T})$ (K)	$\Delta T_c/15 \text{ T}$ (K/T)
0.062	6.35	19.5	2.0	1.17
0.074	6.45	39.5	10.5	1.93
0.079	6.45	45.0	11.5	2.23
0.100	6.49	57.8	12.5	3.02
0.109	6.54	61.3	7.8	3.57
0.110	6.54	61.5	8.5	3.53
0.119	6.67	65.0	10.5	3.63
0.121	6.67	66.0	9.0	3.80
0.135	6.80	78.5	28.7	3.32
0.138	6.80	82.0	32.5	3.30
0.139	6.80	82.5	36.0	3.10
0.150	6.86	90.8	52.6	2.55
0.150	6.86	91.0	53.0	2.53
0.158	6.92	93.5	68.0	1.70
0.158	6.92	93.5	67.8	1.71
0.172	6.95	93.1	68.0	1.67
0.173	6.99	93.0	69.1	1.59
0.174	6.95	92.7	70.8	1.46
0.177	6.97	92.0	72.8	1.28
0.178	6.97	91.5	71.5	1.33
0.181	6.998	90.5	72.3	1.21
0.181	6.998	90.5	69.3	1.41
0.181	6.998	90.5	67.0	1.57
0.190	Ca1.4%	87.0	65.2	1.45
0.190	Ca1.4%	87.0	68.5	1.23

TABLE II. Characteristics of all samples whose sensitivity of T_c to pressure is plotted in Figs. 4(b) and 7. Zero-resistance T_c at ambient pressure ($P = 0$), doping p , measured initial slope dT_c/dP . $(\partial T_c/\partial P)_p$ corresponds to the measured dT_c/dP corrected for the doping effect of pressure (see Sec. III D). In the fourth column, we list the term $(\partial T_c/\partial p)_p$ that goes into this correction. The last column gives the reference for the data. Our own three samples are identified as "Own."

$T_c(0)$ (K)	p	dT_c/dP (K/GPa)	$(\partial T_c/\partial p)_p$ (K/hole)	$(\partial T_c/\partial P)_p$ (K/GPa)	Ref.
14.0	0.059	1.1	2064.32	-0.1 ± 0.1	[60]
13.5	0.059	2.0	2079.08	0.8 ± 0.1	[29]
17.1	0.061	2.1	1901.22	1.0 ± 0.2	[29]
25.0	0.065	1.7	1661.15	0.6 ± 0.3	[61]
26.4	0.066	2.2	1644.39	1.1 ± 0.3	[61]
27.1	0.066	2.4	1636.17	1.3 ± 0.3	[61]
34.4	0.071	2.3	1514.45	1.2 ± 0.1	[29]
54.2	0.090	3.0	453.84	2.6 ± 0.2	[45]
54.5	0.090	3.0	428.50	2.6 ± 0.2	Own
55.1	0.092	2.7	337.67	2.4 ± 0.3	[61]
55.1	0.092	3.0	337.67	2.7 ± 0.3	[61]
60.2	0.107	3.5	406.50	3.1 ± 0.4	Own
61.3	0.109	3.8	398.10	3.4 ± 0.2	[45]
61.4	0.110	3.8	396.10	3.4 ± 0.2	[45]
63.0	0.114	6.6	377.22	6.2 ± 0.3	[61]
64.0	0.116	6.6	403.97	6.1 ± 0.3	[61]
64.2	0.117	7.1	412.42	6.6 ± 0.2	[29]
65.3	0.119	7.2	467.50	6.9 ± 0.5	Own
67.2	0.123	7.0	616.06	6.2 ± 0.2	[45]
73.6	0.131	6.5	1012.29	5.2 ± 0.2	[45]
75.0	0.132	6.3	1086.33	4.9 ± 0.2	[45]
80.2	0.137	4.3	1187.43	2.7 ± 0.1	[39]
82.5	0.139	4.0	1115.16	2.5 ± 0.1	[39]
86.0	0.142	3.9	864.92	2.7 ± 0.2	[45]
87.7	0.144	4.0	718.94	3.0 ± 0.1	[39]
89.3	0.147	0.7	576.82	-0.2 ± 0.2	[62]
89.8	0.148	0.6	531.21	-0.1 ± 0.2	[63]
90.2	0.148	2.5	495.32	1.8 ± 0.2	[45]
91.1	0.150	0.8	423.91	0.2 ± 0.1	[64]
92.4	0.154	0.4	328.33	-0.10 ± 0.08	[45]
92.9	0.155	1.7	277.42	1.3 ± 0.1	[39]
93.1	0.156	0.8	257.46	0.4 ± 0.1	[65]
93.7	0.169	0.6	-157.27	0.83 ± 0.06	[39]
92.5	0.175	0.2	-259.58	0.69 ± 0.06	[29]
92.3	0.176	-0.1	-269.86	0.35 ± 0.08	[61]
91.0	0.180	0.05	-335.27	0.65 ± 0.09	[64]
90.8	0.181	-0.5	-346.04	0.1 ± 0.1	[64]
89.7	0.184	-0.8	-396.45	-0.1 ± 0.1	[64]
88.2	0.187	-0.3	-455.77	0.6 ± 0.1	[65]
88.0	0.187	-0.8	-462.91	0.1 ± 0.1	[64]
88.0	0.187	-1.2	-462.91	-0.33 ± 0.03	[66]
87.6	0.188	-0.6	-479.67	0.3 ± 0.1	[64]

- [1] T. Wu, H. Mayaffre, S. Krämer, M. Horvatić, C. Berthier, W. N. Hardy, R. Liang, D. A. Bonn, and M.-H. Julien, *Nature (London)* **477**, 191 (2011).
- [2] G. Ghiringhelli, M. Le Tacon, M. Minola, S. Blanco-Canosa, C. Mazzoli, N. B. Brookes, G. M. De Luca, A. Frano, D. G. Hawthorn, F. He, T. Loew, M. M. Sala, D. C. Peets, M. Salluzzo, E. Schierle, R. Sutarto, G. A. Sawatzky, E. Weschke, B. Keimer, and L. Braicovich, *Science* **337**, 821 (2012).
- [3] J. Chang, E. Blackburn, A. T. Holmes, N. B. Christensen, J. Larsen, J. Mesot, R. Liang, D. A. Bonn, W. N. Hardy, A. Watenphul, M. v. Zimmermann, E. M. Forgan, and S. M. Hayden, *Nat. Phys.* **8**, 871 (2012).
- [4] A. J. Achkar, R. Sutarto, X. Mao, F. He, A. Frano, S. Blanco-Canosa, M. Le Tacon, G. Ghiringhelli, L. Braicovich, M. Minola, M. Moretti Sala, C. Mazzoli, R. Liang, D. A. Bonn, W. N. Hardy, B. Keimer, G. A. Sawatzky, and D. G. Hawthorn, *Phys. Rev. Lett.* **109**, 167001 (2012).
- [5] T. P. Croft, C. Lester, M. S. Senn, A. Bombardi, and S. M. Hayden, *Phys. Rev. B* **89**, 224513 (2014).
- [6] W. Tabis, Y. Li, M. L. Tacon, L. Braicovich, A. Kreyssig, M. Minola, G. Dellea, E. Weschke, M. J. Veit, M. Ramazanoglu, A. I. Goldman, T. Schmitt, G. Ghiringhelli, N. Barišić, M. K. Chan, C. J. Dorow, G. Yu, X. Zhao, B. Keimer, and M. Greven, *Nat. Commun.* **5**, 5875 (2014).
- [7] R. Comin, A. Frano, M. M. Yee, Y. Yoshida, H. Eisaki, E. Schierle, E. Weschke, R. Sutarto, F. He, A. Soumyanarayanan, Y. He, M. Le Tacon, I. S. Elfimov, J. E. Hoffman, G. A. Sawatzky, B. Keimer, and A. Damascelli, *Science* **343**, 390 (2014).
- [8] E. H. da Silva Neto, P. Aynajian, A. Frano, R. Comin, E. Schierle, E. Weschke, A. Gyenis, J. Wen, J. Schneeloch, Z. Xu, S. Ono, G. Gu, M. Le Tacon, and A. Yazdani, *Science* **343**, 393 (2014).
- [9] J. M. Tranquada, B. J. Sternlieb, J. D. Axe, Y. Nakamura, and S. Uchida, *Nature (London)* **375**, 561 (1995).
- [10] M. Hücker, N. B. Christensen, A. T. Holmes, E. Blackburn, E. M. Forgan, R. Liang, D. A. Bonn, W. N. Hardy, O. Gutowski, M. v. Zimmermann, S. M. Hayden, and J. Chang, *Phys. Rev. B* **90**, 054514 (2014).
- [11] S. Blanco-Canosa, A. Frano, E. Schierle, J. Porras, T. Loew, M. Minola, M. Bluschke, E. Weschke, B. Keimer, and M. Le Tacon, *Phys. Rev. B* **90**, 054513 (2014).
- [12] T. Wu, H. Mayaffre, S. Krämer, M. Horvatić, C. Berthier, P. L. Kuhns, A. P. Reyes, R. Liang, W. N. Hardy, D. A. Bonn, and M.-H. Julien, *Nat. Commun.* **4**, 2113 (2013).
- [13] N. Doiron-Leyraud, C. Proust, D. LeBoeuf, J. Levallois, J.-B. Bonnemaison, R. Liang, D. A. Bonn, W. N. Hardy, and L. Taillefer, *Nature (London)* **447**, 565 (2007).
- [14] N. Doiron-Leyraud, S. Badoux, S. René de Cotret, S. Lepault, D. LeBoeuf, F. Laliberté, E. Hassinger, B. J. Ramshaw, D. A. Bonn, W. N. Hardy, R. Liang, J. H. Park, D. Vignolles, B. Vignolle, L. Taillefer, and C. Proust, *Nat. Commun.* **6**, 6034 (2015).
- [15] D. LeBoeuf, N. Doiron-Leyraud, J. Levallois, R. Daou, J.-B. Bonnemaison, N. E. Hussey, L. Balicas, B. J. Ramshaw, R. Liang, D. A. Bonn, W. N. Hardy, S. Adachi, C. Proust, and L. Taillefer, *Nature (London)* **450**, 533 (2007).
- [16] D. LeBoeuf, N. Doiron-Leyraud, B. Vignolle, M. Sutherland, B. J. Ramshaw, J. Levallois, R. Daou, F. Laliberté, O. Cyr-Choinière, J. Chang, Y. J. Jo, L. Balicas, R. Liang, D. A. Bonn, W. N. Hardy, C. Proust, and L. Taillefer, *Phys. Rev. B* **83**, 054506 (2011).
- [17] J. Fink, V. Soltwisch, J. Geck, E. Schierle, E. Weschke, and B. Büchner, *Phys. Rev. B* **83**, 092503 (2011).
- [18] F. Laliberté, J. Chang, N. Doiron-Leyraud, E. Hassinger, R. Daou, M. Rondeau, B. Ramshaw, R. Liang, D. Bonn, W. Hardy, S. Pyon, T. Takayama, H. Takagi, I. Sheikin, L. Malone, C. Proust, K. Behnia, and L. Taillefer, *Nat. Commun.* **2**, 432 (2011).
- [19] R. Liang, D. A. Bonn, and W. N. Hardy, *Phys. Rev. B* **73**, 180505 (2006).
- [20] Y. Ando, S. Komiya, K. Segawa, S. Ono, and Y. Kurita, *Phys. Rev. Lett.* **93**, 267001 (2004).
- [21] R. Daou, J. Chang, D. LeBoeuf, O. Cyr-Choinière, F. Laliberté, N. Doiron-Leyraud, B. J. Ramshaw, R. Liang, D. A. Bonn, W. N. Hardy, and L. Taillefer, *Nature (London)* **463**, 519 (2010).
- [22] A. Nakayama, Y. Onda, S. Yamada, H. Fujihisa, M. Sakata, Y. Nakamoto, K. Shimizu, S. Nakano, A. Ohmura, F. Ishikawa, and Y. Yamada, *J. Phys. Soc. Jpn.* **83**, 093601 (2014).
- [23] G. Grissonnanche, O. Cyr-Choinière, F. Laliberté, S. René de Cotret, A. Juneau-Fecteau, S. Dufour-Beauséjour, M.-E. Delage, D. LeBoeuf, J. Chang, B. J. Ramshaw, D. A. Bonn, W. N. Hardy, R. Liang, S. Adachi, N. E. Hussey, B. Vignolle, C. Proust, M. Sutherland, S. Kramer, J.-H. Park, D. Graf, N. Doiron-Leyraud, and L. Taillefer, *Nat. Commun.* **5**, 3280 (2014).
- [24] O. Cyr-Choinière, D. LeBoeuf, S. Badoux, S. Dufour-Beauséjour, D. A. Bonn, W. N. Hardy, R. Liang, D. Graf, N. Doiron-Leyraud, and L. Taillefer, *arXiv:1503.02033*.
- [25] S. M. Souliou, H. Gretarsson, G. Garbarino, A. Bosak, J. Porras, T. Loew, B. Keimer, and M. Le Tacon, *Phys. Rev. B* **97**, 020503 (2018).
- [26] H. Huang, H. Jang, M. Fujita, T. Nishizaki, Y. Lin, J. Wang, J. Ying, J. S. Smith, C. Kenney-Benson, G. Shen, W. L. Mao, C.-C. Kao, Y.-J. Liu, and J.-S. Lee, *Phys. Rev. B* **97**, 174508 (2018).
- [27] R. Liang, D. A. Bonn, and W. N. Hardy, *Phil. Mag.* **92**, 2563 (2012).
- [28] S. Sadewasser, Y. Wang, J. S. Schilling, H. Zheng, A. P. Paulikas, and B. W. Veal, *Phys. Rev. B* **56**, 14168 (1997).
- [29] S. Sadewasser, J. S. Schilling, A. P. Paulikas, and B. W. Veal, *Phys. Rev. B* **61**, 741 (2000).
- [30] O. Cyr-Choinière, R. Daou, F. Laliberté, C. Collignon, S. Badoux, D. LeBoeuf, J. Chang, B. J. Ramshaw, D. A. Bonn, W. N. Hardy, R. Liang, J.-Q. Yan, J.-G. Cheng, J.-S. Zhou, J. B. Goodenough, S. Pyon, T. Takayama, H. Takagi, N. Doiron-Leyraud, and L. Taillefer, *Phys. Rev. B* **97**, 064502 (2018).
- [31] C. Collignon, S. Badoux, S. A. A. Afshar, B. Michon, F. Laliberté, O. Cyr-Choinière, J.-S. Zhou, S. Licciardello, S. Wiedmann, N. Doiron-Leyraud, and L. Taillefer, *Phys. Rev. B* **95**, 224517 (2017).
- [32] C. E. Matt, C. G. Fatuzzo, Y. Sassa, M. Månsson, S. Fatale, V. Bitetta, X. Shi, S. Pailhès, M. H. Berntsen, T. Kurosawa, M. Oda, N. Momono, O. J. Lipscombe, S. M. Hayden, J.-Q. Yan, J.-S. Zhou, J. B. Goodenough, S. Pyon, T. Takayama, H. Takagi, L. Patthey, A. Bendounan, E. Razzoli, M. Shi, N. C. Plumb, M. Radovic, M. Grioni, J. Mesot, O. Tjernberg, and J. Chang, *Phys. Rev. B* **92**, 134524 (2015).
- [33] N. Doiron-Leyraud, O. Cyr-Choinière, S. Badoux, A. Ataei, C. Collignon, A. Gourgout, S. Dufour-Beauséjour, F. F. Tafti, F. Laliberté, M.-E. Boulanger, M. Matusiak, D. Graf, M. Kim, J.-S. Zhou, N. Momono, T. Kurosawa, H. Takagi, and L. Taillefer, *Nat. Commun.* **8**, 2044 (2017).
- [34] T. Cvitanić, D. Pelc, M. Požek, E. Amit, and A. Keren, *Phys. Rev. B* **90**, 054508 (2014).

- [35] E. A. Yelland, J. Singleton, C. H. Mielke, N. Harrison, F. F. Balakirev, B. Dabrowski, and J. R. Cooper, *Phys. Rev. Lett.* **100**, 047003 (2008).
- [36] A. F. Bangura, J. D. Fletcher, A. Carrington, J. Levallois, M. Nardone, B. Vignolle, P. J. Heard, N. Doiron-Leyraud, D. LeBoeuf, L. Taillefer, S. Adachi, C. Proust, and N. E. Hussey, *Phys. Rev. Lett.* **100**, 047004 (2008).
- [37] S. Badoux, W. Tabis, F. Laliberté, G. Grissonnanche, B. Vignolle, D. Vignolles, J. Béard, D. A. Bonn, W. N. Hardy, R. Liang, L. Doiron-Leyraud, N. Taillefer, and C. Proust, *Nature (London)* **531**, 210 (2016).
- [38] C. Putzke, J. Ayres, J. Buhot, S. Licciardello, N. E. Hussey, S. Friedemann, and A. Carrington, *Phys. Rev. Lett.* **120**, 117002 (2018).
- [39] C. C. Almasan, S. H. Han, B. W. Lee, L. M. Paulius, M. B. Maple, B. W. Veal, J. W. Downey, A. P. Paulikas, Z. Fisk, and J. E. Schirber, *Phys. Rev. Lett.* **69**, 680 (1992).
- [40] J. J. Neumeier and H. A. Zimmermann, *Phys. Rev. B* **47**, 8385 (1993).
- [41] N. Yamada and M. Ido, *Physica C* **203**, 240 (1992).
- [42] C. W. Chu, L. Gao, F. Chen, Z. J. Huang, R. L. Meng, and Y. Y. Xue, *Nature (London)* **365**, 323 (1993).
- [43] M. K. Crawford, R. L. Harlow, S. Deemyad, V. Tissen, J. S. Schilling, E. M. McCarron, S. W. Tozer, D. E. Cox, N. Ichikawa, S. Uchida, and Q. Huang, *Phys. Rev. B* **71**, 104513 (2005).
- [44] M. Hücker, M. v. Zimmermann, M. Debessai, J. S. Schilling, J. M. Tranquada, and G. D. Gu, *Phys. Rev. Lett.* **104**, 057004 (2010).
- [45] R. Benischke, T. Weber, W. H. Fietz, J. Metzger, K. Grube, T. Wolf, and H. Wühl, *Physica C* **203**, 293 (1992).
- [46] O. Kraut, C. Meingast, G. Bräuchle, H. Claus, A. Erb, G. Müller-Vogt, and H. Wühl, *Physica C* **205**, 139 (1993).
- [47] P. L. Alireza, G. H. Zhang, W. Guo, J. Porras, T. Loew, Y.-T. Hsu, G. G. Lonzarich, M. Le Tacon, B. Keimer, and S. E. Sebastian, *Phys. Rev. B* **95**, 100505 (2017).
- [48] D. Haug, V. Hinkov, Y. Sidis, P. Bourges, N. B. Christensen, A. Ivanov, T. Keller, C. T. Lin, and B. Keimer, *New J. Phys.* **12**, 105006 (2010).
- [49] S. Blanco-Canosa, A. Frano, T. Loew, Y. Lu, J. Porras, G. Ghiringhelli, M. Minola, C. Mazzoli, L. Braicovich, E. Schierle, E. Weschke, M. Le Tacon, and B. Keimer, *Phys. Rev. Lett.* **110**, 187001 (2013).
- [50] Z. Guguchia, A. Maisuradze, G. Ghambashidze, R. Khasanov, A. Shengelaya, and H. Keller, *New J. Phys.* **15**, 093005 (2013).
- [51] A. Georges, G. Kotliar, W. Krauth, and M. J. Rozenberg, *Rev. Mod. Phys.* **68**, 13 (1996).
- [52] A.-M. S. Tremblay, Strongly correlated superconductivity, in *Emergent Phenomena in Correlated Matter Modeling and Simulation*, edited by E. Pavarini, E. Koch, and U. Schollwöck (Forschungszentrum, Jülich, Germany, 2013), Vol. 3, Chap. 10.
- [53] E. Gull, O. Parcollet, and A. J. Millis, *Phys. Rev. Lett.* **110**, 216405 (2013).
- [54] P. Werner, E. Gull, O. Parcollet, and A. J. Millis, *Phys. Rev. B* **80**, 045120 (2009).
- [55] G. Sordi, P. Sémon, K. Haule, and A.-M. Tremblay, *Sci. Rep.* **2**, 547 (2012).
- [56] O. Cyr-Choinière, S. Badoux, G. Grissonnanche, B. Michon, S. A. A. Afshar, S. Fortier, D. LeBoeuf, D. Graf, J. Day, D. A. Bonn, W. N. Hardy, R. Liang, N. Doiron-Leyraud, and L. Taillefer, *Phys. Rev. X* **7**, 031042 (2017).
- [57] D. LeBoeuf, S. Kramer, W. N. Hardy, R. Liang, D. A. Bonn, and C. Proust, *Nat. Phys.* **9**, 79 (2013).
- [58] S. Gerber, H. Jang, H. Nojiri, S. Matsuzawa, H. Yasumura, D. A. Bonn, R. Liang, W. N. Hardy, Z. Islam, A. Mehta, S. Song, M. Sikorski, D. Stefanescu, Y. Feng, S. A. Kivelson, T. P. Devereaux, Z.-X. Shen, C.-C. Kao, W.-S. Lee, D. Zhu, and J.-S. Lee, *Science* **350**, 949 (2015).
- [59] L. Gao, Y. Y. Xue, F. Chen, Q. Xiong, R. L. Meng, D. Ramirez, C. W. Chu, J. H. Eggert, and H. K. Mao, *Phys. Rev. B* **50**, 4260 (1994).
- [60] V. G. Tissen, Y. Wang, A. P. Paulikas, B. W. Veal, and J. S. Schilling, *Physica C* **316**, 21 (1999).
- [61] W. H. Fietz, R. Quenzel, H. A. Ludwig, K. Grube, F. W. H. S. I. Schlachter, T. Wolf, A. Erb, M. Kläser, and G. Müller-Vogt, *Physica C* **270**, 258 (1996).
- [62] S. Klotz, W. Reith, and J. Schilling, *Physica C* **172**, 423 (1991).
- [63] S. W. Tozer, J. L. Koston, and E. M. McCarron III, *Phys. Rev. B* **47**, 8089 (1993).
- [64] W. H. Fietz, R. Quenzel, K. Grube, J. Metzger, T. Weber, and H. A. Ludwig, *Physica C* **235–240 Part 3**, 1785 (1994).
- [65] K. Yoshida, A. I. Rykov, S. Tajima, and I. Terasaki, *Phys. Rev. B* **60**, R15035(R) (1999).
- [66] R. Lortz, T. Tomita, Y. Wang, A. Junod, J. Schilling, T. Masui, and S. Tajima, *Physica C* **434**, 194 (2006).